

Operator	Area	Assembly Point	Location
Enemalta	Administration, Visitors, Third Party and Contractors	A	Main Gate
Enemalta	Workshop and Stores	B	Outside Workshop Main Door
Enemalta	Phase I and Phase IIB Operators	C	(*) Phase IIA/ John Brown LCR
Enemalta	Phase III and Fuel Tanks Operators	D	Laydown Area In Front Of Wärtsilä Offices
EGM	Regasification Plant	E	Secondary Gate
EGM	Regasification	F	Regasification Electrical and Control Building
EGM	Delimara 4 CCGT	G	CCGT Administrative and Control Building
EGM	FSU	H	Emergency Boats
EGM	Jetty	I	Berthing Dolphin n° 8 (BD08)

(*) Operations staff will report to their area of duty, unless their area is endangered.

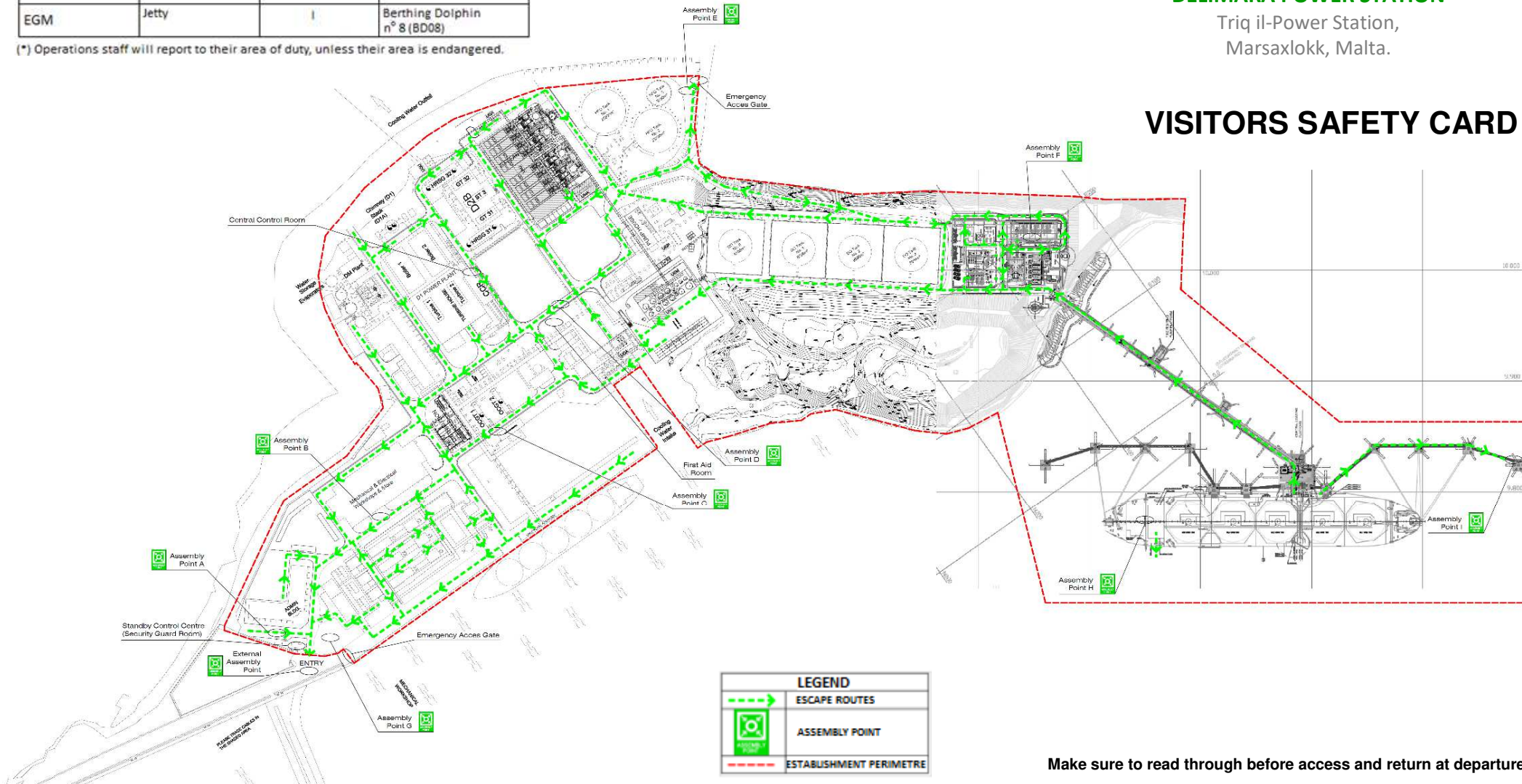
ASSEMBLY POINTS LOCATION & EVACUATION ROUTES



DELIMARA POWER STATION

Triq il-Power Station,
Marsaxlokk, Malta.

VISITORS SAFETY CARD



LEGEND	
	ESCAPE ROUTES
	ASSEMBLY POINT
	ESTABLISHMENT PERIMETRE

Make sure to read through before access and return at departure

ACCESS TO THE FACILITIES

- Authorisation to access site is required. Please call at the Security Guard Room.
- Please follow instructions received at Security Guard Room.
- Identification badge must be visible while you are in the Site.
- You are not permitted to enter any other areas of the premises unless supervised by your host.
- Only authorised vehicles are allowed to circulate throughout the installations.
- You are requested to sign out prior to departure and return identification badge.

GENERAL INSTRUCTIONS INSIDE THE FACILITIES

- Smoking is strictly prohibited except in designated areas.
- Still and video photography is prohibited unless prior authorisation has been obtained.
- Lighters and matches are forbidden. Please leave them in the Security Guard Room while inside the installations.
- You are not allowed to handle any equipment within the installation, unless authorised by the personnel of the Site.
- A Permit to work system is enforced at the site. Before any work is carried out on the plant the appropriate permit must be obtained through your site contact person.
- Hot work permit system is enforced at the site. Before any work is carried out on the plant the appropriate permit must be obtained through your site contact person.
- Observe safety signage and instructions. Please follow instructions given by your host.



- Speed limit: 15 km/h. Maltese road traffic regulations apply. Observe traffic signs. Give way to Pedestrians and cyclists.
- PARKING: Please park your vehicle in the car park if authorised. If in emergency situations you have to park in another place, leave vehicle opened, with keys in the ignition and not obstructing traffic, work or any signage. Never obstruct any fire fighting equipment, emergency exit or access route.



MANDATORY PERSONAL PROTECTIVE EQUIPMENT

- Protective clothing, helmet, safety glasses and safety footwear must be used in working areas marked.



- In ATEX classified areas, anti-static and flame resistant clothing must be used.
- Depending on the area or your specific work, use of other personal protective equipment may be required.

ATEX CLASSIFIED AREAS

- The presence of natural gas in the facilities may generate EXplosive ATmospheres (ATEX).
- Areas where hazardous EXplosive ATmospheres may occur are marked with a specific 'EX' sign.



- Using your mobile phone or similar electronic devices is strictly prohibited.
- Non-ATEX equipment is not allowed in ATEX zones. Do not use other ignition sources in 'Ex' marked zones.
- You must not enter into any classified zone with a vehicle.
- Use of non-certified 'Ex' instruments and devices in ATEX zones must be authorised through a Hot Work Permit.

ENVIRONMENTAL PROTECTION

- Please care for the environment and prevent any spillages.
- In case of a chemical or oil spill contact immediately the control room and give clear indications as to the type and the whereabouts of the spill. Actions should be taken to control the spill in the shortest time possible.
- Permission by the responsible engineer is required to bring in hazardous substances on site. A copy of the Safety Data Sheet (SDS) for the hazardous substance is to be forwarded to the responsible engineer who will in turn forward it to the Health, Safety and Environmental Officer and related Plant Chemist.
- Contractor shall make arrangements with Operators for Waste collection and disposal PRIOR to commencement of works for correct disposal of any waste generated from his activities.

ACTUATION IN CASE OF EMERGENCY

- If you notice a fire or any other emergency, make use of the Break Glass Alarm or immediately inform any Site employee or contact with:

EMERGENCY CONTACT LIST

Main contacts – Available 24/7

CONTACT	OPERATOR	PHONE NO.
Central Control Room (CCR)	ENE	22980 788 / 789
Security Guard Room	ENE	22980 840
D3 Control Room (at CCR)	D3PG	22980 850 / 784
D4 Control Room	ESBI	25401252/3/5
Regas Control Room	Reganosa	22585611/12/13/14
FSU Control Room	BUMI	79999384

- In the event of a fire or other emergency condition the fire alarm will sound.
- Follow instructions of your Operator personnel.
- Do not run and keep calm.
- All emergency exits and evacuation routes are marked using European standard signage (Green Exit signs). Escape routes are fitted with emergency lighting.
- Leave the facilities through the nearest evacuation route and follow the directions of the Emergency Response Officers to the assembly point (see map).

FIRST AID

- First aid kits are available at the Central Control Room + other key locations.
- Eyewash and Emergency Shower units are installed at key points around the site and clearly marked.
- For more serious injuries there is a First aid room which opens from 07:00 – 18:00 Monday to Sunday.
- In the event of any serious injury contact the Central Control Room to initiate Emergency Response action plan.

LNG

- LNG is a cryogenic liquefied gas which is stored at a temperature of approximately -162°C.
- LNG is not toxic, but it might displace atmospheric oxygen when it is released.

- LNG (dispersion) clouds may occur when the cold cryogenic gas is mixed with warm air.